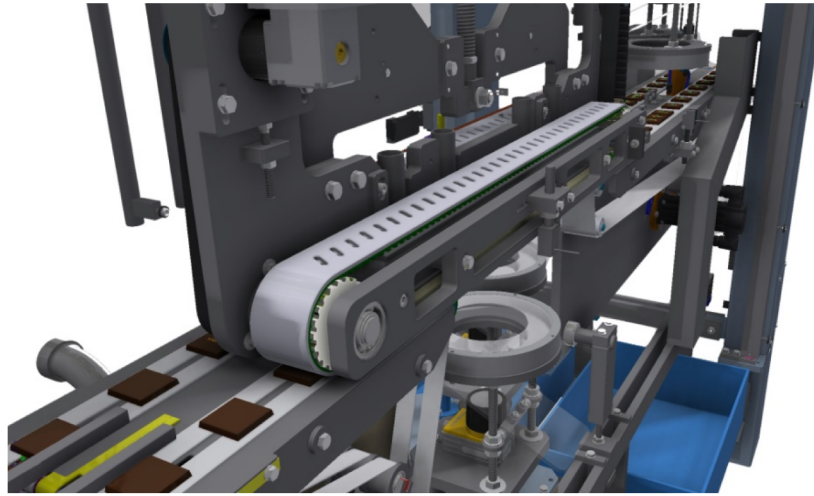


# QIS Quality Inspection System

## to increment production excellence

Fast, Easy, Flexible



### Quality Vision Inspection System

Fast Operation, Easy to Use, High Flexibility

Master Technologies introduced in the market a new designed equipment to control the quality of the products by Vision Cameras, incrementing the excellence of the production for the final customers. Packages can be inspected to control the centering of the printed logos or many other defects caused by the wrapping machine. Products naked can be also inspected to identify imperfection by the processing equipment.

Wrapped products can be inspect at high speed on top and on bottom surfaces, on the same machine. If required the inspection can be extended to the sides of the products.

Servo technology is applied to control the belts and consequently the position of the products during inspection. This allow to remove from the line the defected products in a very precise position.

Intuitive touch screen operation allows easy to set and recall various recipes. An additional touch screen PC based allow to made adjustment on the products areas to be inspected by the cameras.



### Package Defects

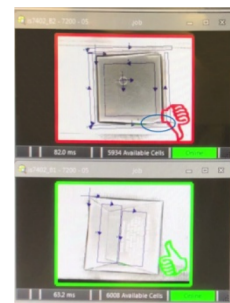
Visual inspection made with Cameras to identify many kind of defects of the packaging.

Quality production is improved by removing all defected products from the line



### Bottom Inspection

Thanks to vacuum belt that holds the products during transportation, it is possible to execute the inspection of the bottom part of the packages.



### PC base Touch Screen

On the PC based Touch Screen is possible to monitoring the control of the cameras as well creating different kind of new recipes of products to be inspected

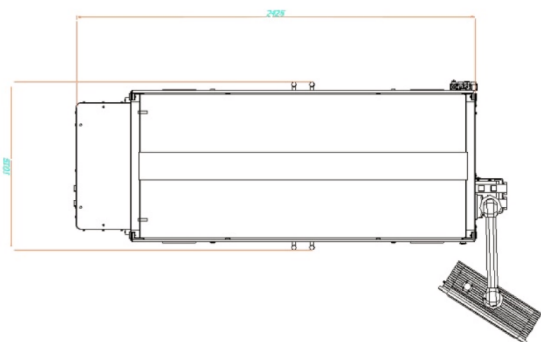
## Technical data

<b>Speed</b>	Up to 400 Inspections/min	<b>Power</b>	3-phases, 380–400 V, 50/60 Hz
	Up to 800 Inspection/min with simple defects to be analyzed		
<b>Products size</b>	Various Products Dimensions	<b>Air</b>	6 bar

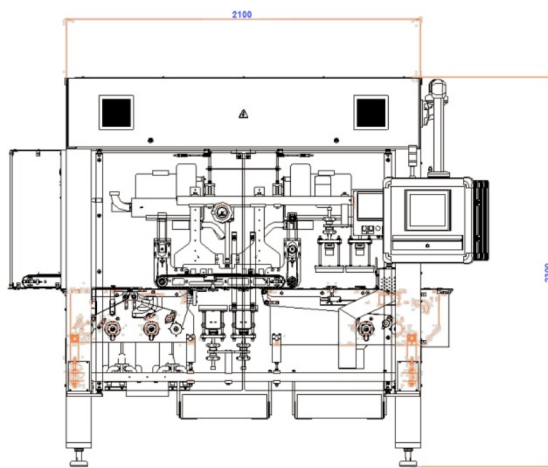
## Options

Different model of Cameras	Different model of PC for programming Cameras
Products Side Inspection	Rejects of products mechanically actuated
Preparation of the products prior the inspection	Different type of servo controls
Conveyors to transfer products into the QIS	

Top view



Front view



## Related Products



### Top Loading Pick and Place Robots

- Fully Automatic System for place products into the display cartons after been inspected by the QIS.
- Carton erector and carton closing integrated into the loading system



### Grouping and Overwrapping

- Multipack application by grouping or stacking the products after been inspected by the QIS
- Flow-Pack Wrapping Machine for Multipack



[www.mastertechnologies.eu](http://www.mastertechnologies.eu)

For more information

Master Technologies s.r.l.  
Via Goretta 92/b - Frazione Mappano  
10072 Caselle Torinese - (Torino) - Italy  
Telephone +39 011 207 1811  
Facsimile +39 011 207 4302

Subject to technical changes.  
© 12/2017 Master Technologies s.r.l.  
Printed in Italy.