

Masterwrap MW.22.BSx Horizontal Flow Wrapper

Technical Specification



Fully servo driven horizontal flow wrapper

Easy, Reliable, Versatile

The Masterwrap MW.22.BSx is the most versatile horizontal flow wrapping machine of Master Technologies offering different sealing technologies and a wide variety of automated applications. The wrapper has been optimized with regard to safe operation, easy cleaning, simplified maintenance and steady product changeover. Altogether helping food manufacturer to significantly increase their packaging production uptimes.

Technical data

Speed	Up to 350/600 packs/min Up to 60 m/min (film)	Film size	Reel width 400/600/700 mm Reel Ø max. 350 mm Reel core 70/76 mm
Product size	Cut-off 50 .. 500 mm Length 45 .. 270 mm Width 10 .. 230 mm Height 1 .. 100 mm	Power	3-phases, 380–480 V, 50/60 Hz 14 kVA / Earth, no zero conductor
		Air	6 bar; 0.03–1 m ³ /h

Machine description

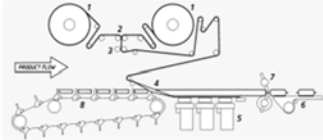
- Fully servo driven
- Strong welded frame with front aluminum plate
- Cantilevered construction for easy cleaning and accessibility
- Machine painted in epoxy paint color white, RAL 9010
- Machine based on axis motion control with integrated task PLC
- Digitally controlled cut-off length with possibility to memorize 99 different programs with automatic setting of the wrapping system
- Operator's friendly interface with touchscreen display
- 3 independent brushless servomotors with separate controller, synchronized by the central microprocessor, to drive infeed chain, fin seal wheels, transverse crimpers
- Guards and product contact parts in Stainless Steel
- 4 sets of fin seal rollers with separate servomotor :
 - 1st set for film pulling
 - 2nd set for sealing with automatic opening
 - 3rd set for sealing with automatic opening
 - 4th set for fin seal foldover
- Electronic PID control of the sealing temperatures with auto-Tuning
- Cantilevered sealing crimpers assembly with separate servomotor and adjustable in height
- 2-up sealing crimpers in special alloy, with transverse or longitudinal pattern
- Crimpers stop in open position
- Straight or serrated cutting knives in Cobalt based HSS steel
- Double reel holder with fine adjustment for film alignment
- Balancing arm for constant film tension control
- Electronically controlled film print registration
- Adjustable or fixed, open top forming box
- 2 Mt. long infeed chain with separate servomotor and offset
- Stainless Steel chain, top plates in stainless steel and adjustable side guides
- Discharge conveyor with FDA approved belt, 600 mm. long
- Digital speed read-out integrated on the display
- Emergency spare parts kit and tools
- CE safety certification

Options

- No gap – no seal
- No product – no bag
- Automatic reel splicer
- Power feed roll
- 3-up, 4-up crimper for high speed
- **Long dwell sealing**
- Air tide transverse sealing up to 500 packs/min
- Cooling plates over fin wheels
- Coding system
- Mechanical or air gusseting device
- Transparent guards for easy visual inspection
- Tear strip applicator (length-/crosswise) for easy pack opening
- End seal folder
- Flat or U-board carton sheeter
- Automatic feeding systems (inline, 110°, wafer)
- **Length slug configuration**
- Cross slug configuration
- **Pile pack configuration**
- STEEL-IT paint

➤ www.mastertechnologies.eu

Additional Information



Schematic

1. Double reel holder
2. Automatic reel splicer (Optional)
3. Power feed roll (Optional)
4. Forming box
5. Fin seal rollers
6. Discharge conveyor
7. Transverse sealing crimpers
8. Product pushers

Hiseal Long Dwell

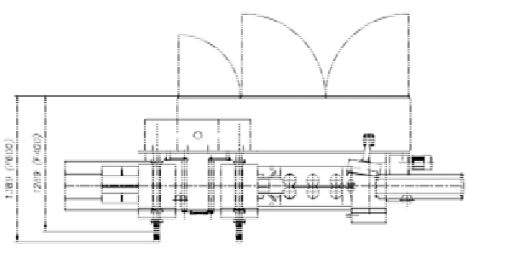
- Transverse sealing system to obtain air tight transverse sealing up-to 500 products/minute
- Depending upon the nature and sizes of the products to be wrapped and the type and quality of the wrapping material



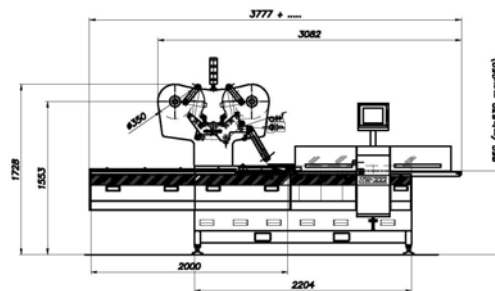
ESC

- Advanced control technology
- Allows adding servo-drives, controlled by given axis motion control, to drive feeding systems and other accessories
- Easy accessibility and parts standardization for minimum spare parts requirements

Top view



Front view



➤ www.mastertechnologies.eu

For more information

Master Technologies s.r.l.
Via Goretta 92/b - Frazione Mappano
10072 Caselle Torinese - (Torino) - Italy
Telephone +39 011 207 1811
Facsimile +39 011 207 4302

Subject to technical changes.
© 06/2017 Master Technologies s.r.l.
Printed in Italy.